



# Efficient & Effective

## PILING MACHINE



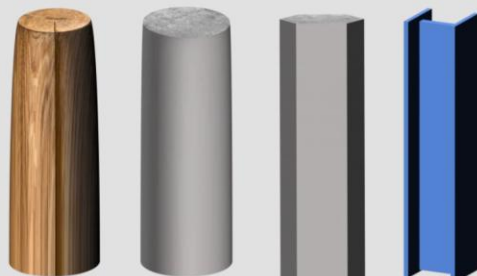
### Products details:

- Non-slip handle
- Easy to start device
- Safety switch

### Application:

- Road railing
- Ranch fence
- Orchard bracket

### PILES TYPES:



Timber Concrete Precast Concrete Steel H Composite

### Model

**MC-010J2**

Engine	52CC, Single Cylinder 2 Pole
Engine Type	Air-cooled Gasoline (Gasoline:2T Oil;25:1)
Fuel Tank Capacity	1.3L
Maximum Horsepower and Speed	1900W/6500r/min
Maximum Torque and Speed	1.5N.m/5000r/min
Fuel Consumption Rate	0.6L/h
Piling Diameter	60mm / 80mm
Impact Frequency	1300-3000BPM
Piling Energy	30-55J
Weight (kg)	18